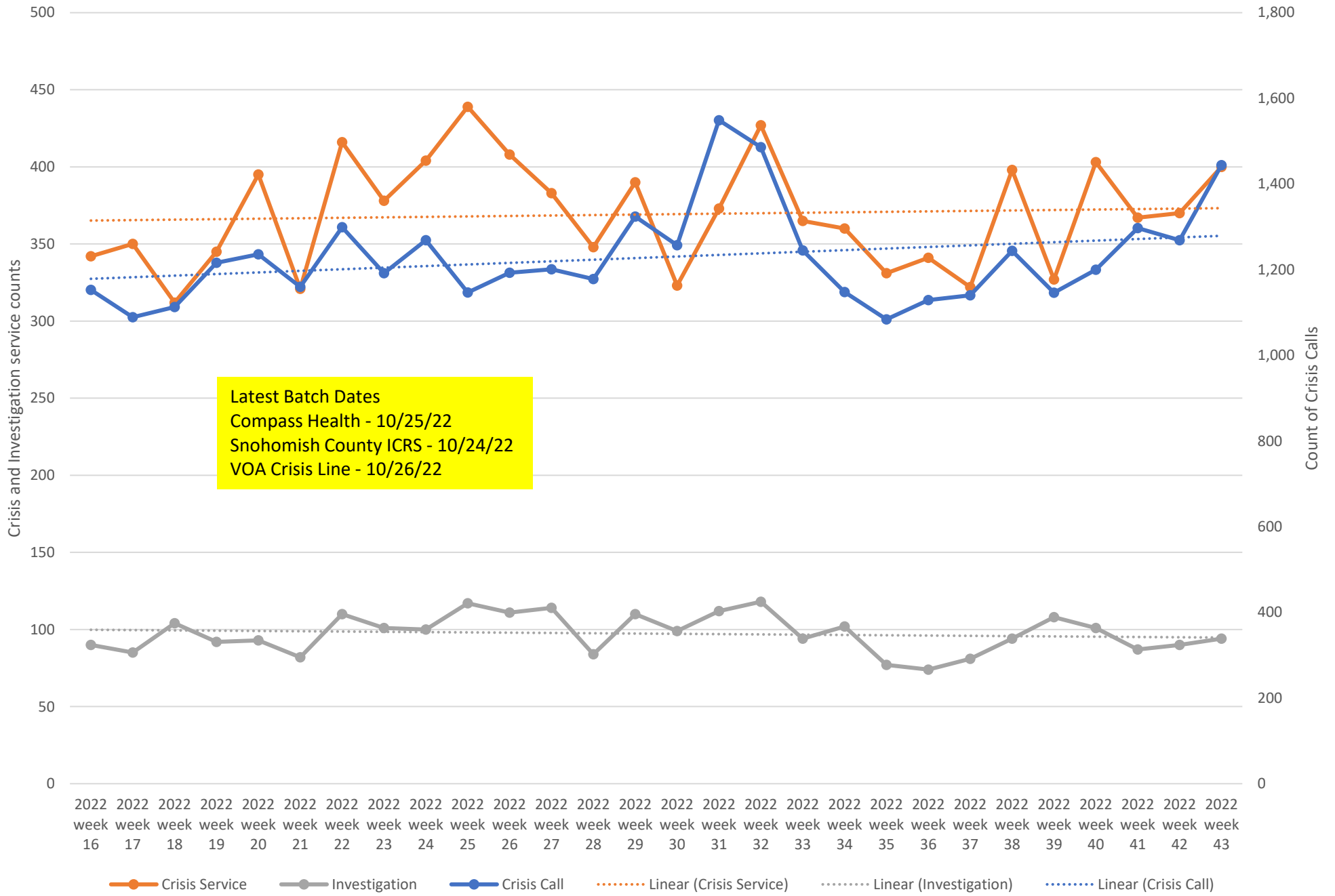




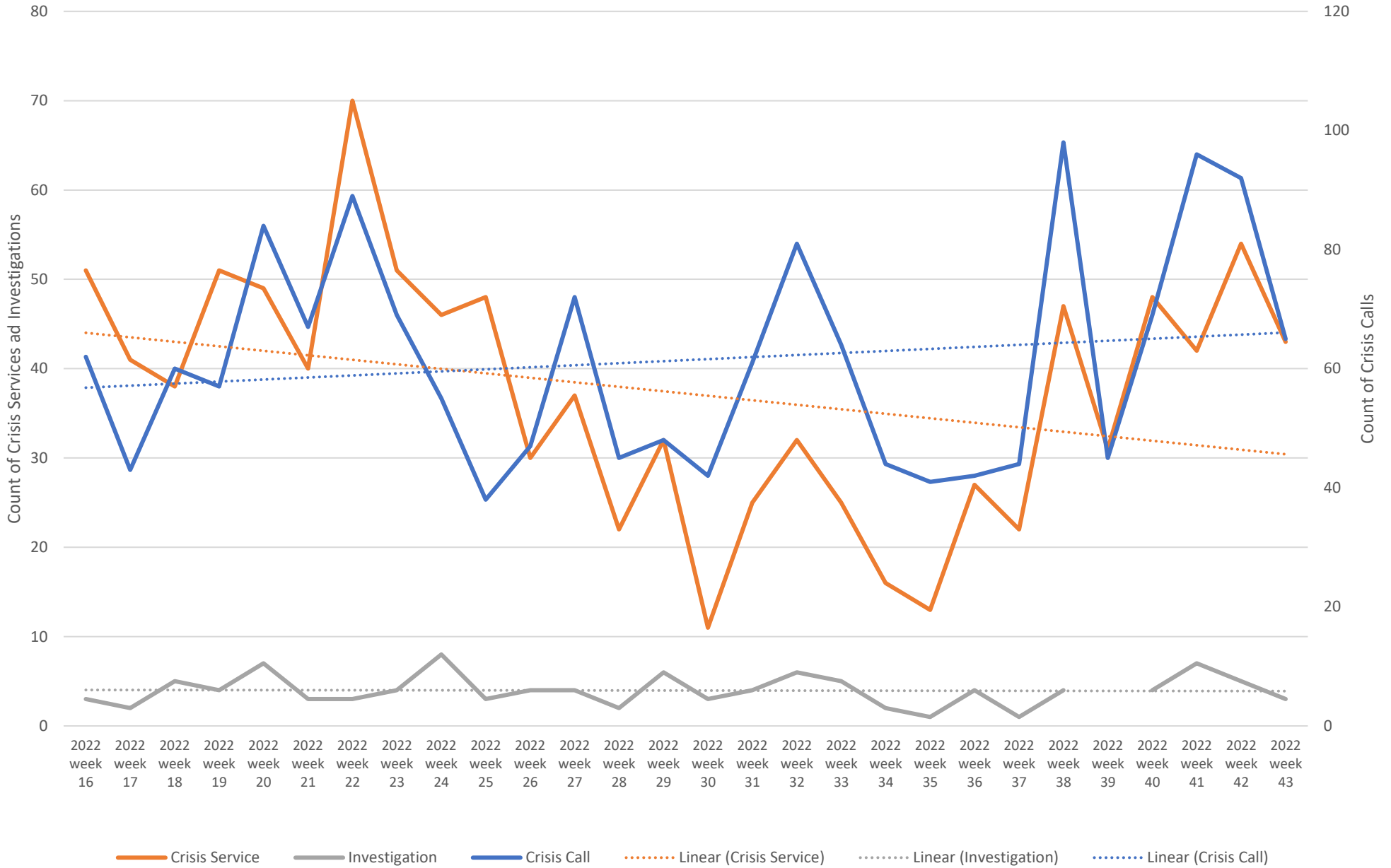
Weekly Crisis Capacity Indicator Snapshot

Page 2	Crisis Data - dates 04/10/22 to 10/22/22
Page 3	Crisis Data: Ages 0-17 - dates 04/10/22 to 10/22/22
Page 4	All DCR Dispatches - dates 04/10/22 to 10/22/22
Page 5	Weekly Staff Count - Staff providing Crisis or Investigation services 04/10/22 to 10/22/22
Page 6	Hospital placement locations (Invol and Vol) - No adjustment has been made for timely data - recent weeks likely low
Page 7	Telehealth only, crisis and investigation services from 04/10/22 to 10/22/22
Page 8	Crisis Service Unit Percent - Crisis Service units divided by Crisis units + Investigation units
Page 9	Washington State Indicators of Anxiety or Depression Based on Reported Frequency of Symptoms During Last 7 Days
Page 10	Place of Service -Crisis Services, percent of total by week
Page 11	Place of Service -Investigations, percent of total by week
Page 12	New COVID-19 Cases Reported Weekly per 100,000 population - 08/04/21 to 10/26/22
Page 13	Total Hospitalized Adults - COVID-19 (confirmed or suspected) 7 day average
Page 14	North Sound BH ASO Walkaway Chart 04/10/22 to 10/22/22

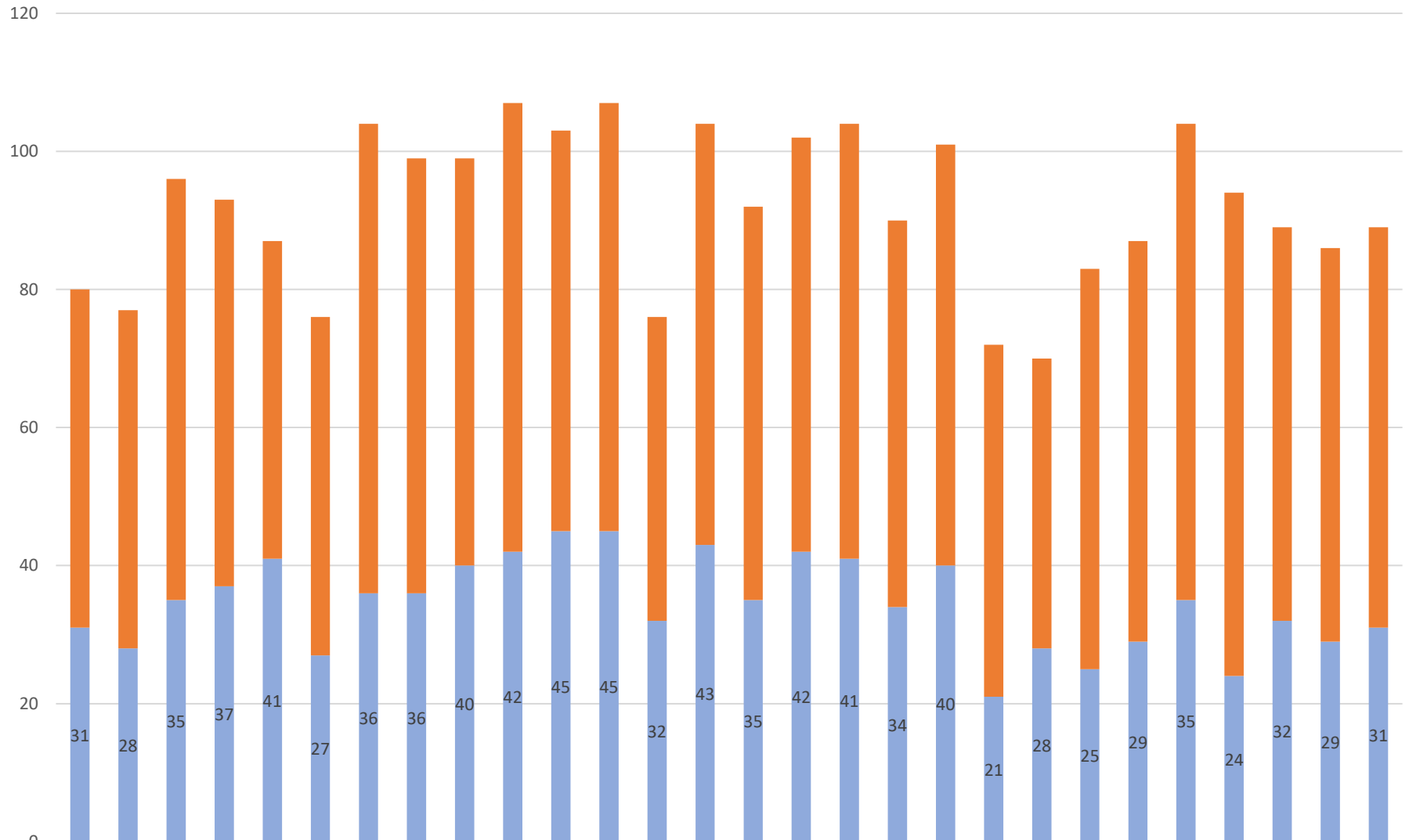
Crisis Data - dates 04/10/22 to 10/22/22



Crisis Data: Ages 0-17 - dates 04/10/22 to 10/22/22

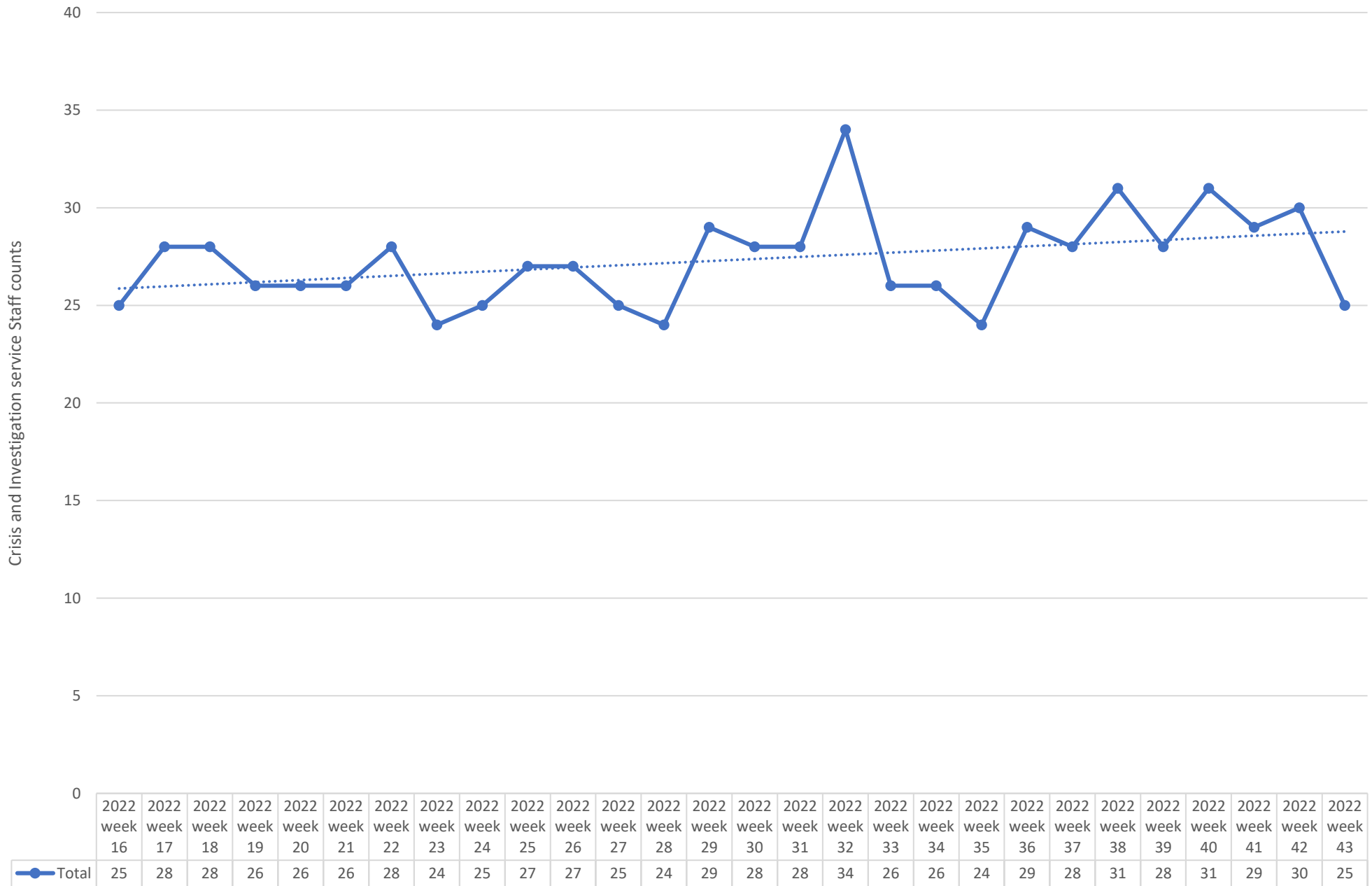


All DCR Dispatches - dates 04/10/22 to 10/22/22



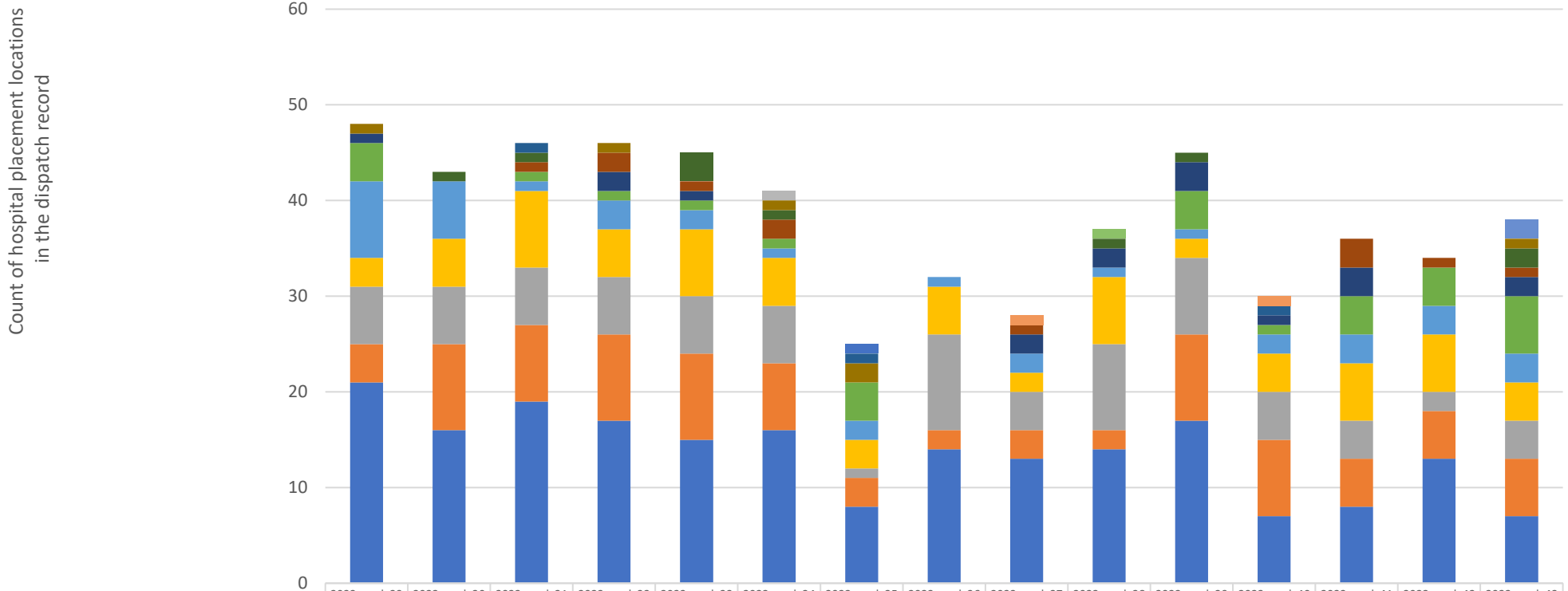
dispatch resulting in other outcome	49	49	61	56	46	49	68	63	59	65	58	62	44	61	57	60	63	56	61	51	42	58	58	69	70	57	57	58
dispatch resulting in detention	31	28	35	37	41	27	36	36	40	42	45	45	32	43	35	42	41	34	40	21	28	25	29	35	24	32	29	31

Weekly Staff Count - Staff providing Crisis or Investigation services 04/10/22 to 10/22/22



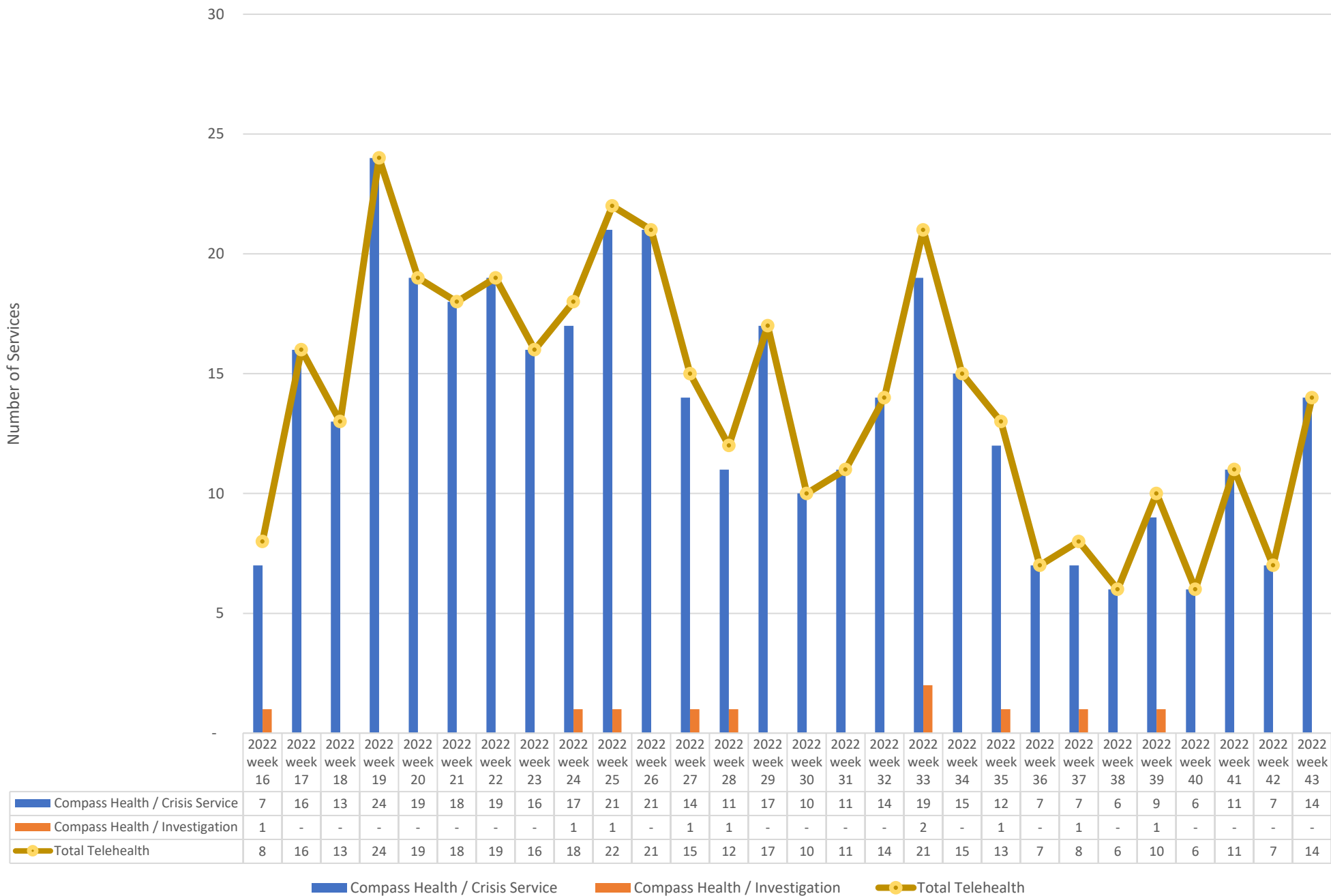
2022 week 43 ending 01/00/00

Hospital placement locations (Invol and Vol) - No adjustment has been made for timely data - recent weeks likely low

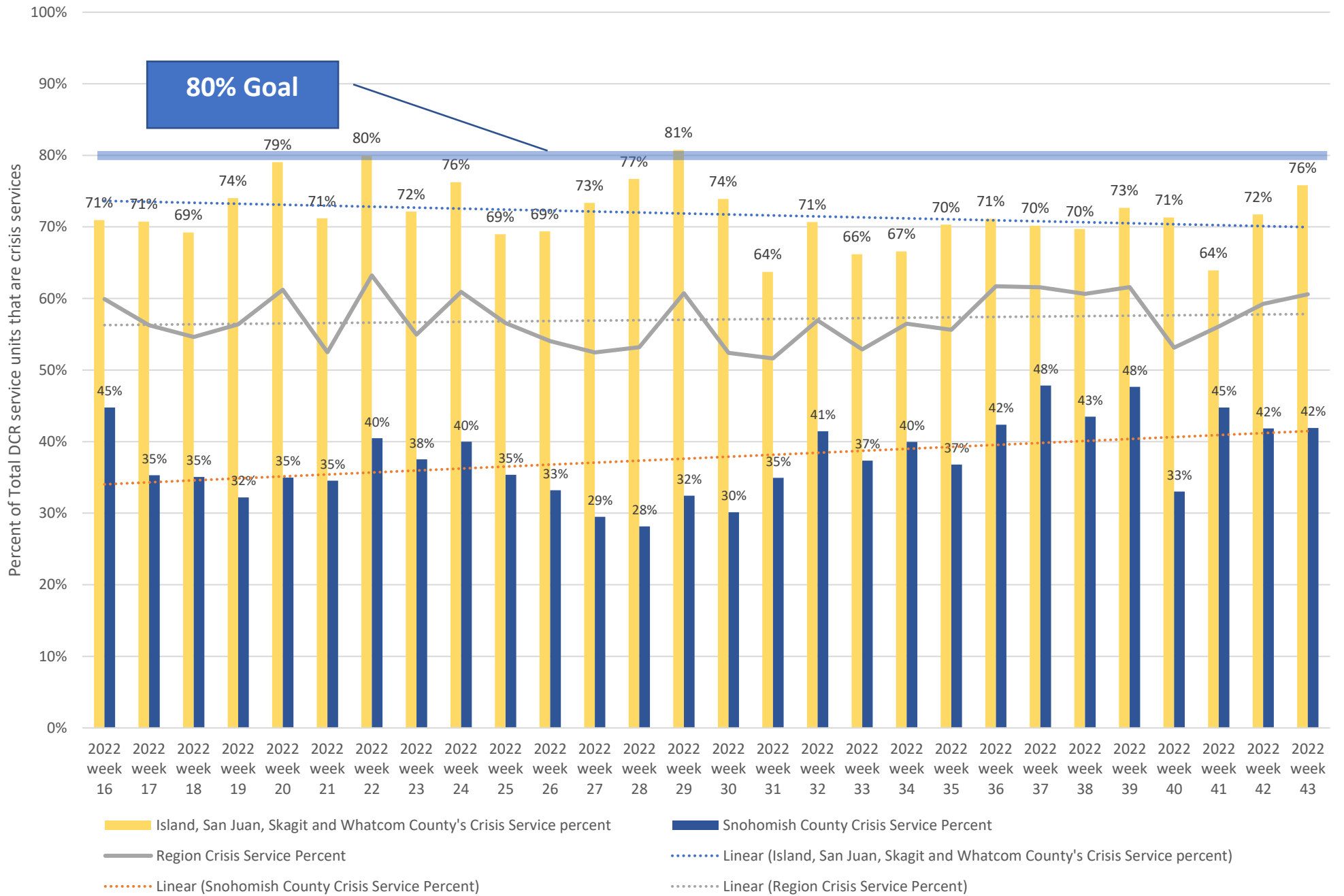


	2022 week 29	2022 week 30	2022 week 31	2022 week 32	2022 week 33	2022 week 34	2022 week 35	2022 week 36	2022 week 37	2022 week 38	2022 week 39	2022 week 40	2022 week 41	2022 week 42	2022 week 43
Tacoma General										1					
Multicare Behavioral Health Inpatient Services - Auburn							1								
SWEDISH MEDICAL CENTER CHERRY HILL												1			
THURSTON/MASON EandT FACILITY						1									
Cascade Behavioral Hospital LLC									1						
Western State															2
American Behavioral Health Systems SSI					3										
ABHS Chehalis			1				1					1			
Swedish Mill Creek	1			1		1	2								1
VALLEY GENERAL HOSPITAL		1	1			1				1	1				2
Telecare North Sound Evaluation and Treatment			1	2	1	2			1				3	1	1
Mukilteo	1			2	1				2	2	3	1	3		2
BHC Fairfax Hospital INC	4		1	1	1	1	4				4	1	4	4	6
SMOKEY POINT BEHAVIORAL HOSPITAL	8	6	1	3	2	1	2	1	2	1	1	2	3	3	3
Skagit Valley Hospital	3	5	8	5	7	5	3	5	2	7	2	4	6	6	4
Peacehealth Bellingham	6	6	6	6	6	6	1	10	4	9	8	5	4	2	4
SWEDISH EDMONDS	4	9	8	9	9	7	3	2	3	2	9	8	5	5	6
Providence Everett	21	16	19	17	15	16	8	14	13	14	17	7	8	13	7

Telehealth only, crisis and investigation services from 04/10/22 to 10/22/22



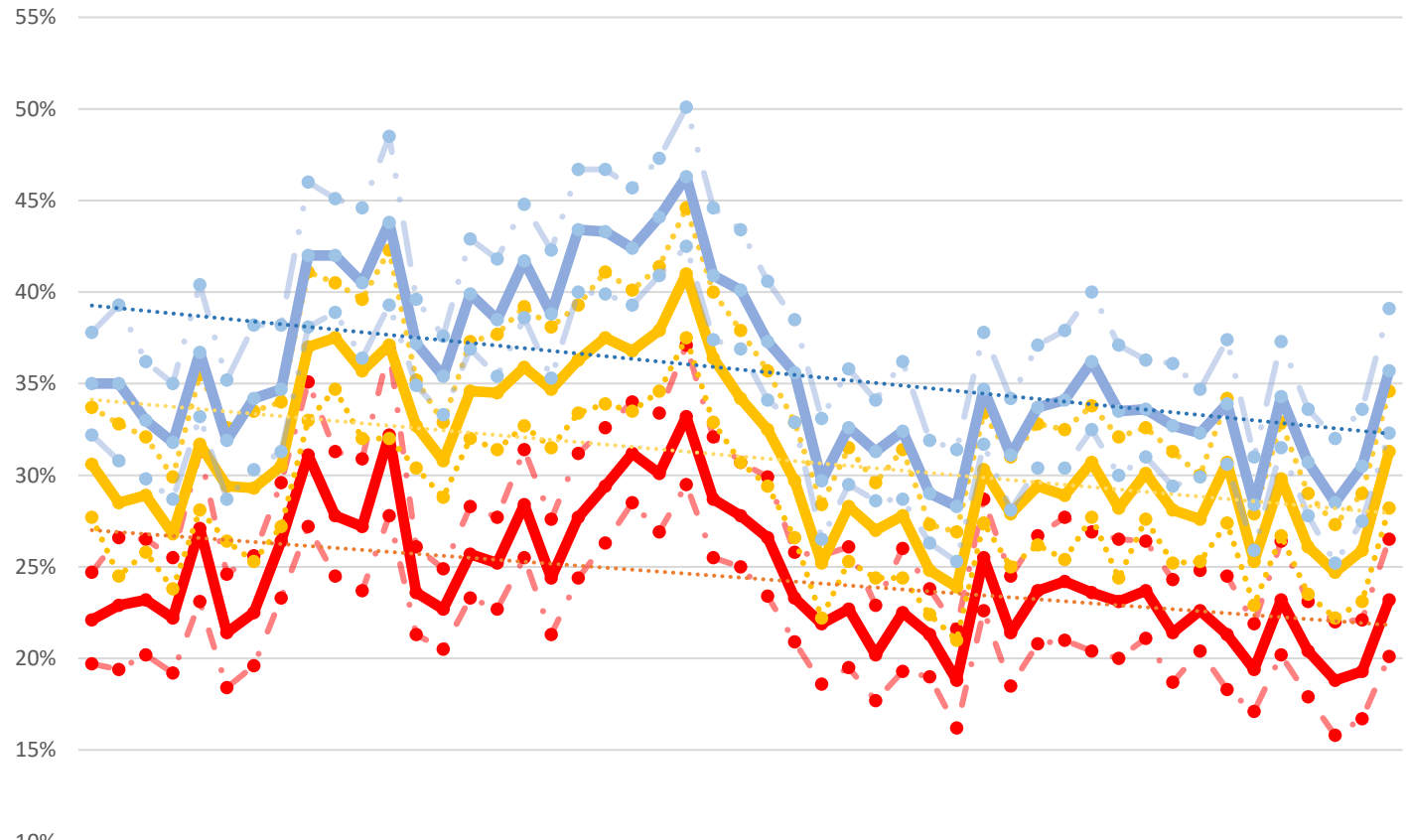
Crisis Service Unit Percent - Crisis Service units divided by Crisis units + Investigation units



Washington State Indicators of Anxiety or Depression Based on Reported Frequency of Symptoms During Last 7 Days

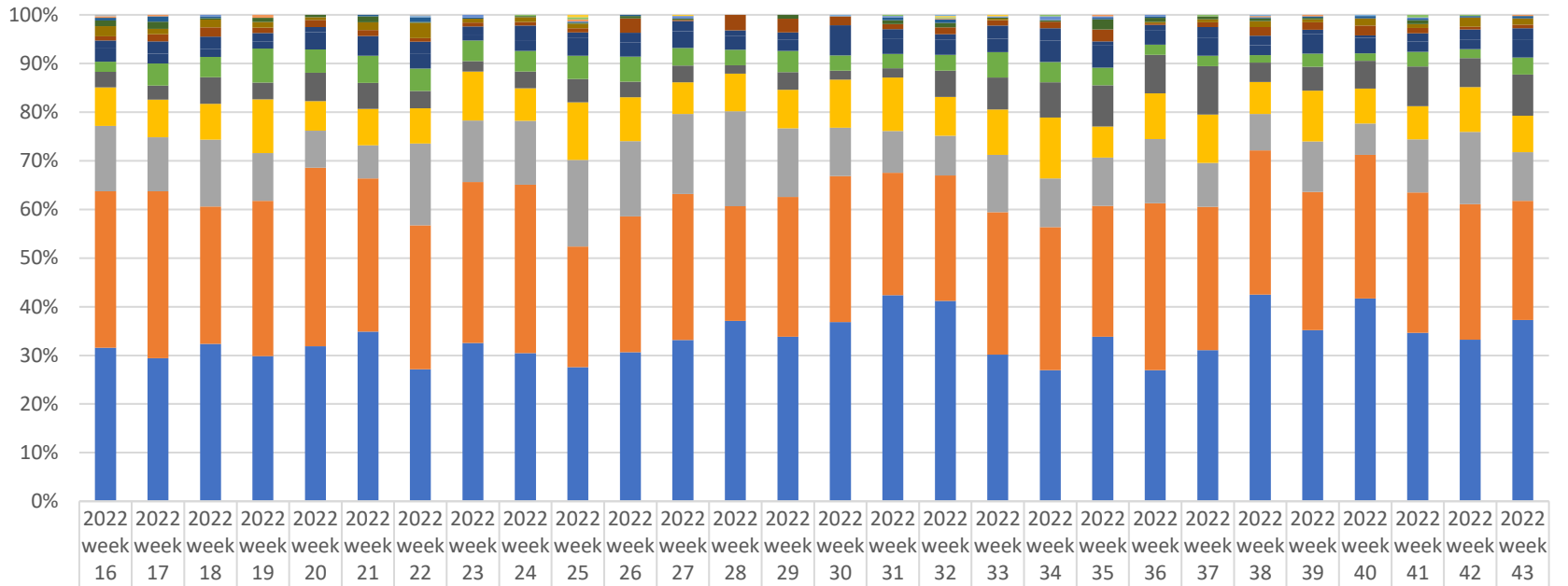
The U.S. Census Bureau, in collaboration with five federal agencies, launched the Household Pulse Survey to produce data on the social and economic impacts of Covid-19 on American households. The Household Pulse Survey was designed to gauge the impact of the pandemic on employment status, consumer spending, food security, housing, education disruptions, and dimensions of physical and mental wellness.

<https://data.cdc.gov/NCHS/Indicators-of-Anxiety-or-Depression-Based-on-Repor/8pt5-q6wp>



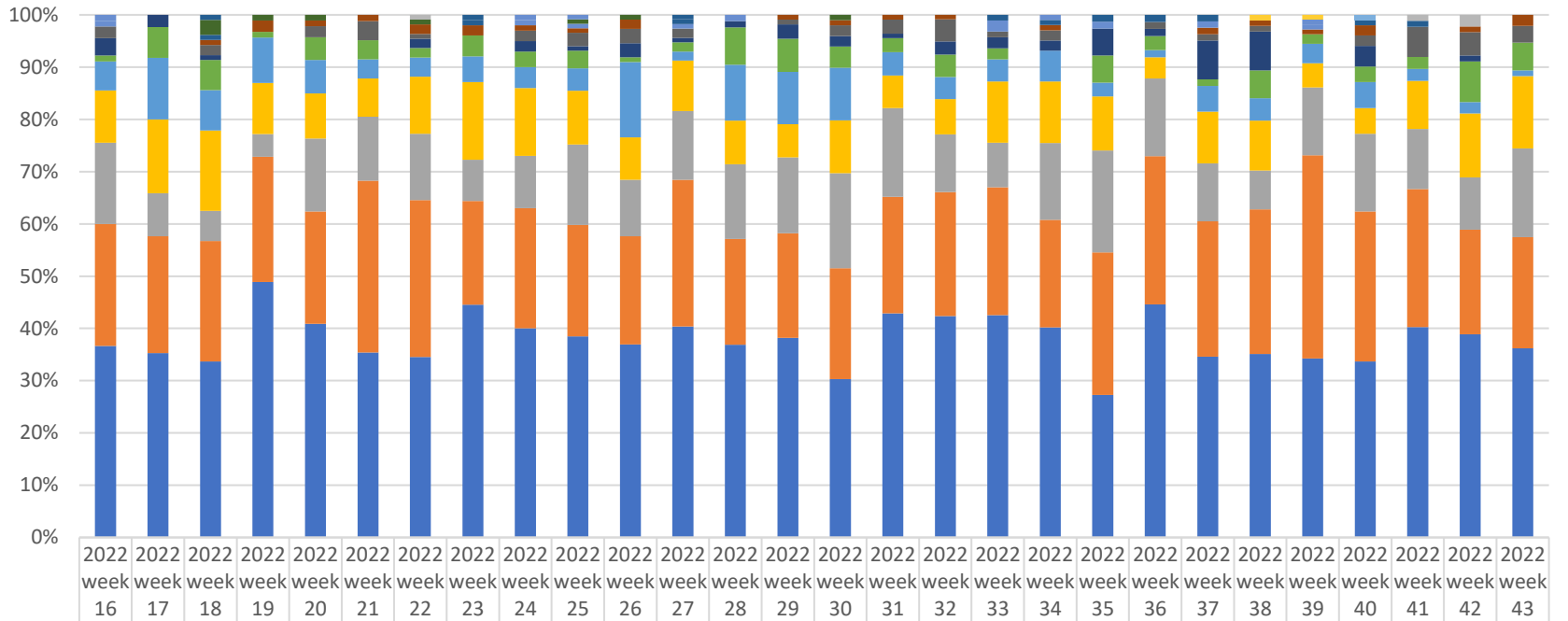
	23-Apr-05	07-May-12	14-May-19	21-May-26	28-May-02	04-Jun-09	11-Jun-16	18-Jun-23	25-Jun-30	02-Jul-07	09-Jul-14	16-Jul-21	19-Aug-31	02-Sep-14	30-Sep-26	14-Oct-09	21-Oct-23	28-Oct-07	04-Nov-11	11-Nov-18	18-Nov-25	25-Dec-01	02-Jan-15	09-Feb-01	17-Feb-15	03-Mar-29	17-Mar-26	28-Apr-10	12-May-24	26-May-07	09-Jun-21	23-Jun-05	04-Jul-16	18-Aug-30	01-Sep-13	15-Sep-27	29-Oct-11	01-Nov-26	29-Dec-11	27-Jan-18	29-Feb-08	14-Mar-26																													
% with Symptoms of Depressive Disorder low conf. level	20%	21%	22%	22%	23%	22%	21%	23%	24%	25%	24%	28%	21%	22%	23%	26%	21%	24%	26%	29%	27%	30%	26%	25%	23%	21%	19%	20%	18%	19%	16%	23%	19%	16%	21%	20%	20%	19%	20%	18%	17%	20%	18%	16%	20%																										
% with Symptoms of Depressive Disorder value	22%	23%	23%	22%	27%	1%	2%	3%	2%	6%	1%	2%	2%	4%	2%	3%	6%	5%	2%	8%	4%	2%	8%	2%	1%	0%	3%	2%	9%	2%	8%	7%	2%	3%	2%	0%	2%	3%	2%	1%	1%	9%	2%	3%	2%	1%	9%	2%																							
% with Symptoms of Depressive Disorder high conf. level	25%	27%	27%	26%	31%	2%	5%	2%	6%	0%	3%	5%	1%	3%	7%	2%	2%	6%	2%	8%	1%	2%	8%	1%	3%	4%	3%	7%	2%	3%	1%	0%	2%	6%	2%	6%	2%	4%	2%	2%	9%	2%	5%	2%	7%	2%	2%	2%	2%	7%																					
% with Symptoms of Anxiety Disorder low conf. level	28%	25%	26%	24%	28%	2%	5%	2%	7%	3%	5%	3%	2%	2%	0%	2%	2%	1%	3%	3%	2%	3%	4%	4%	5%	8%	3%	3%	1%	2%	9%	2%	2%	5%	2%	4%	2%	2%	1%	2%	7%	2%	5%	2%	5%	2%	3%	2%	2%	2%	8%																				
% with Symptoms of Anxiety Disorder value	31%	29%	29%	27%	2%	2%	9%	2%	3%	1%	3%	8%	6%	7%	3%	1%	5%	5%	6%	5%	6%	8%	7%	8%	4%	1%	6%	4%	3%	0%	2%	5%	2%	8%	2%	2%	5%	4%	0%	2%	8%	2%	9%	2%	8%	1%	5%	0%	2%	6%	3%	1%																			
% with Symptoms of Anxiety Disorder high conf. level	34%	33%	2%	0%	6%	3%	4%	3%	4%	1%	1%	4%	0%	4%	2%	5%	3%	7%	8%	9%	8%	9%	4%	1%	4%	0%	1%	4%	5%	4%	0%	8%	9%	4%	1%	4%	3%	7%	7%	3%	4%	3%	2%	8%	3%	1%	0%	4%	2%	8%	3%	2%	9%	2%	9%	5%															
% with Symptoms of Anxiety or Depressive Disorder low conf. level	32%	1%	0%	2%	9%	3%	2%	9%	0%	1%	3%	8%	9%	6%	9%	5%	3%	7%	5%	8%	9%	5%	4%	0%	4%	0%	9%	1%	4%	3%	7%	7%	3%	4%	3%	2%	7%	0%	2%	9%	2%	6%	2%	2%	8%	0%	3%	0%	3%	1%	2%	9%	0%	0%	1%	2%	6%	2%	2%	8%	2%	5%	2%	8%	3%	1%	2%	8%	1%	3%	6%
% with Symptoms of Anxiety or Depressive Disorder value	35%	5%	3%	2%	7%	2%	4%	5%	4%	2%	1%	4%	4%	7%	5%	4%	0%	9%	4%	2%	9%	4%	3%	4%	2%	4%	4%	6%	4%	1%	4%	0%	7%	6%	0%	3%	3%	1%	2%	2%	9%	2%	8%	5%	3%	1%	3%	2%	3%	2%	4%	2%	8%	4%	1%	2%	9%	1%	3%	6%											
% with Symptoms of Anxiety or Depressive Disorder high conf. level	38%	9%	6%	5%	4%	0%	5%	8%	8%	4%	6%	4%	5%	4%	9%	4%	0%	8%	4%	3%	4%	2%	4%	5%	4%	2%	4%	7%	4%	6%	4%	7%	0%	4%	5%	4%	3%	4%	1%	3%	3%	6%	3%	6%	4%	6%	2%	3%	8%	4%	3%	8%	4%	0%	3%	7%	6%	6%	5%	3%	1%	7%	3%	4%	2%	4%	3%	9%			

Place of Service -Crisis Services, percent of total by week



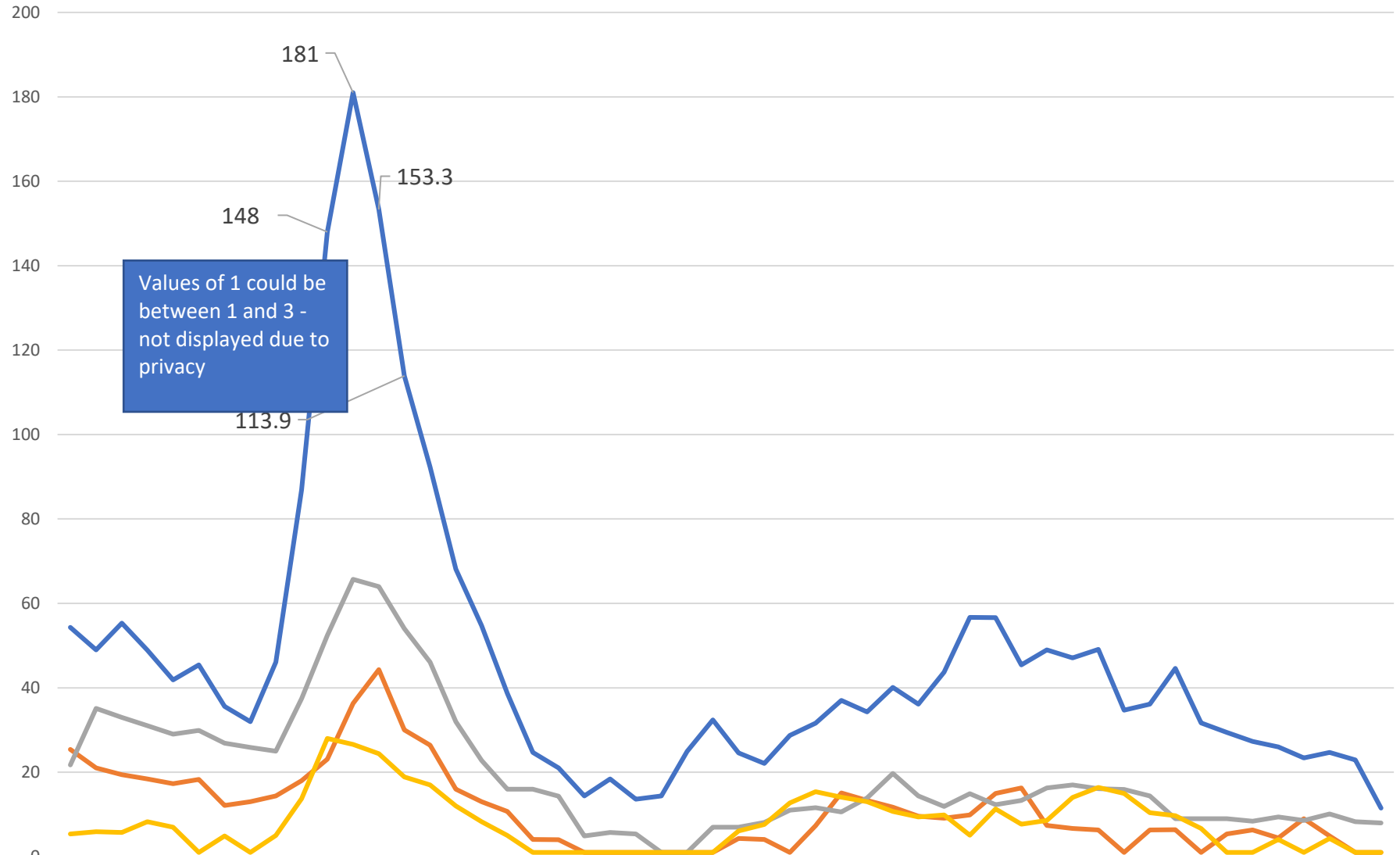
	2022 week 16	2022 week 17	2022 week 18	2022 week 19	2022 week 20	2022 week 21	2022 week 22	2022 week 23	2022 week 24	2022 week 25	2022 week 26	2022 week 27	2022 week 28	2022 week 29	2022 week 30	2022 week 31	2022 week 32	2022 week 33	2022 week 34	2022 week 35	2022 week 36	2022 week 37	2022 week 38	2022 week 39	2022 week 40	2022 week 41	2022 week 42	2022 week 43	
Community Mental Health Center	1						1																						
Custodial Care Facility							1								1	1							1		1				
Skilled Nursing Facility										2		1					1	1											
Nursing Facility									1	2						1	1		1				1				2	1	
On Campus Outpatient Hospital	1	1		2						2							1			1			1	1				1	
Psych. Residential			1					2		1		2				1		1	3	1	1					1			
Group Home	2	4	1			1	4	1			1					2	3			1	1		1	1	2	1	1	2	
Homeless Shelter	4	5	1	3	2	4	1		1	1	2	1		3		3	4	1	1	7	3	2	2	1		3			
School	7	4	5	4	2	5	13	3	4	4								1				1	2	5	2	6	3	7	5
Inpatient Hospital	3	5	6	4	6	4	3	3	3	4	12	1	11	11	6	4	6	4	5	8	1	3	7	5	8	4	2	3	
Inpatient Psychiatric Facility	5	9	8	6	4	4	10	7	12	5	8	8	4	6	6	7	5	10	9	3	4	7	8	3	2	6	8	9	
Prison Correctional Facility	10	7	5	5	14	9	13	4	9	16	12	13	10	9	14	12	13	10	16	15	10	12	8	13	13	8	7	15	
Telehealth	7	16	13	24	19	18	19	16	17	21	21	14	11	17	10	11	14	19	15	12	7	7	6	9	6	11	7	14	
Assisted Living Facility	11	10	17	12	23	17	15	8	14	21	13	13	6	14	6	7	23	24	26	28	27	32	16	16	23	30	22	34	
Emergency Room Hospital	27	27	23	38	24	24	30	38	27	52	37	25	27	31	32	41	34	34	45	21	32	32	26	34	29	25	34	30	
Home	46	39	43	34	30	22	70	48	53	78	63	63	68	55	32	32	35	43	36	33	45	29	30	34	26	40	55	40	
Other Place of Service	110	120	88	110	145	101	123	125	140	109	114	115	82	112	97	94	110	107	106	89	117	95	118	93	119	106	103	98	
Office	108	103	101	103	126	112	113	123	123	121	125	127	129	132	119	158	176	110	97	112	92	100	169	115	168	127	123	149	

Place of Service -Investigations, percent of total by week



	2022 week 16	2022 week 17	2022 week 18	2022 week 19	2022 week 20	2022 week 21	2022 week 22	2022 week 23	2022 week 24	2022 week 25	2022 week 26	2022 week 27	2022 week 28	2022 week 29	2022 week 30	2022 week 31	2022 week 32	2022 week 33	2022 week 34	2022 week 35	2022 week 36	2022 week 37	2022 week 38	2022 week 39	2022 week 40	2022 week 41	2022 week 42	2022 week 43	
Custodial Care Facility																													
On Campus Outpatient Hospital																								1	1				
School							1																				1	2	
Skilled Nursing Facility			1					1				1															1		
Homeless Shelter	1								1	1										1				1					
Community Mental Health Center			3	1	1		1			1	1				1														
Psych. Residential			1					1				1							1	1	1	1	1			1			
Telehealth	1								1	1		1	1					2		1		1		1					
Group Home			1	2	1	1	2	2	1	1	2			1	1	1	1		1			1	1	1	1	2		1	2
Assisted Living Facility	2		2		2	3	1		2	3	3	2		1	2	3	5	1	2		1	1	1		2	5	4	3	
Home	3	2	1				2		2	1	3	1	1	3	2	1	3	2	2	4	1	6	7		4		1		
Office	1	5	6	1	4	3	2	4	3	4	1	2	6	7	4	3	5	2		4	2	1	5	2	3	2	7	5	
Inpatient Hospital	5	10	8	8	6	3	4	5	4	5	16	2	9	11	10	5	5	4	6	2	1	4	4	4	5	2	2	1	
Inpatient Psychiatric Facility	9	12	16	9	8	6	12	15	13	12	9	11	7	7	10	7	8	11	12	8	3	8	9	5	5	8	11	13	
Prison Correctional Facility	14	7	6	4	13	10	14	8	10	18	12	15	12	16	18	19	13	8	15	15	11	9	7	14	15	10	9	16	
Other Place of Service	21	19	24	22	20	27	33	20	23	25	23	32	17	22	21	25	28	23	21	21	21	21	26	42	29	23	18	20	
Emergency Room Hospital	33	30	35	45	38	29	38	45	40	45	41	46	31	42	30	48	50	40	41	21	33	28	33	37	34	35	35	34	

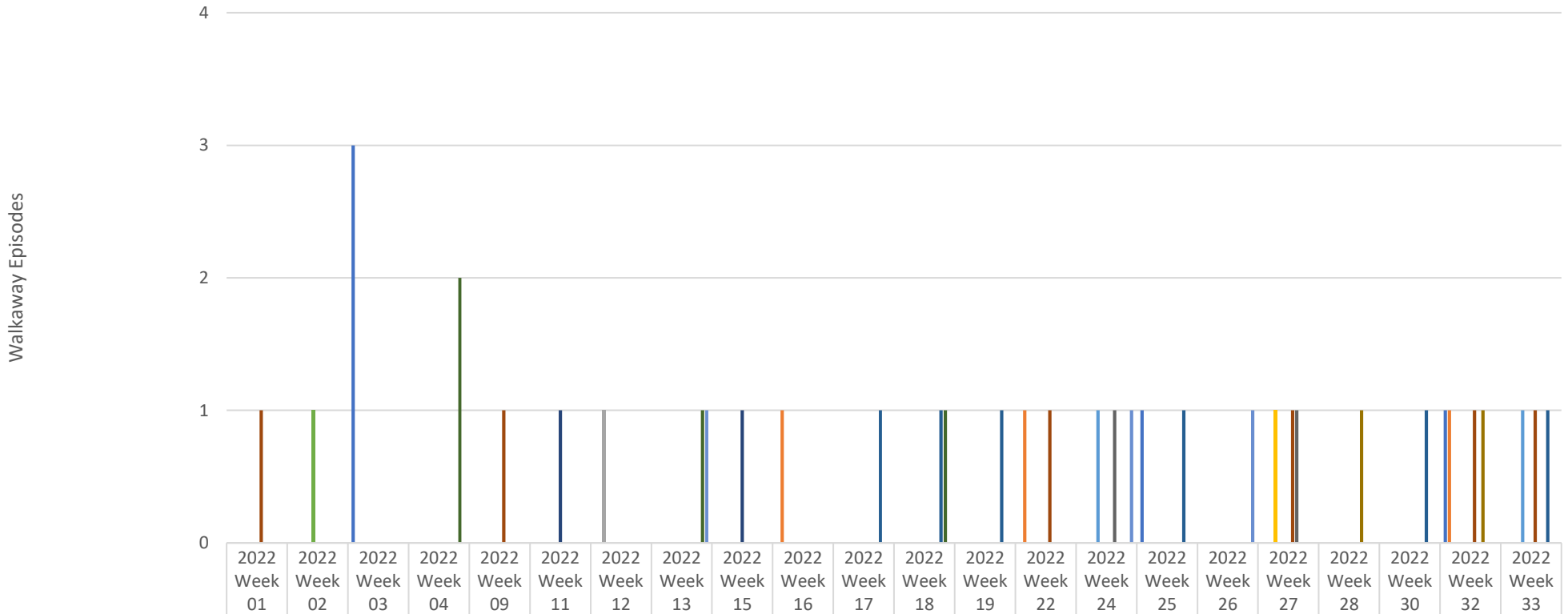
Total Hospitalized Adults - COVID-19 (confirmed or suspected) 7 day average



Values of 1 could be between 1 and 3 - not displayed due to privacy

	10/29/2019	11/5/2021	11/12/2020	11/19/2020	11/26/2020	12/3/2021	12/10/2021	12/17/2021	12/24/2021	12/31/2021	1/7/2022	1/14/2022	1/21/2022	1/28/2022	2/4/2022	2/11/2022	2/18/2022	2/25/2022	3/4/2022	3/11/2022	3/18/2022	3/25/2022	4/1/2022	4/8/2022	4/15/2022	4/22/2022	4/29/2022	5/6/2022	5/13/2022	5/20/2022	5/27/2022	6/3/2022	6/10/2022	6/17/2022	6/24/2022	7/1/2022	7/8/2022	7/15/2022	7/22/2022	7/29/2022	8/5/2022	8/12/2022	8/19/2022	8/26/2022	9/2/2022	9/9/2022	9/16/2022	9/23/2022	9/30/2022	10/7/2022	10/14/2022	10/21/2022
Prov. Everett	54	49	55	49	42	45	36	32	46	87	148	181	153	114	92	68	55	39	25	21	14	18	14	14	25	32	25	22	29	32	37	34	40	36	44	57	57	45	49	47	49	35	36	45	32	29	27	26	23	25	23	12
SVH	25	21	19	18	17	18	12	13	14	18	23	36	44	30	26	16	13	11	4.1	4	1	1	1	1	1	1	4.3	4.1	1	7.3	15	13	12	9.6	9.1	9.9	15	16	7.4	6.7	6.3	1	6.3	6.4	1	5.4	6.3	4.4	9	4.9	1	1
ST Joe	22	35	33	31	29	30	27	26	25	37	52	66	64	54	46	32	23	16	16	14	4.9	5.7	5.4	1	1	7	7	8.1	11	12	11	14	20	14	12	15	12	13	16	17	16	16	14	9	9	9	8.4	9.4	8.6	10	8.3	8
Swedish Edmonds	5.4	5.9	5.7	8.3	7	1	4.9	1	5	14	28	27	24	19	17	12	8.3	5	1	1	1	1	1	1	1	1	6.1	7.6	13	15	14	13	11	9.4	9.9	5.1	11	7.7	8.6	14	16	15	10	9.7	6.7	1	1	4.1	1	4.3	1	1

North Sound BH ASO Walkaway Chart 04/10/22 to 10/22/22



	2022 Week 01	2022 Week 02	2022 Week 03	2022 Week 04	2022 Week 09	2022 Week 11	2022 Week 12	2022 Week 13	2022 Week 15	2022 Week 16	2022 Week 17	2022 Week 18	2022 Week 19	2022 Week 22	2022 Week 24	2022 Week 25	2022 Week 26	2022 Week 27	2022 Week 28	2022 Week 30	2022 Week 32	2022 Week 33	
Cascade Valley Hospital			3													1					1		
Island Hospital					1					1				1								1	
Olympic Medical Center							1																
Peace Island Health																		1					
Providence															1							1	
Providence - Colby		1																					
Skagit Valley						1			1														
St. Joseph	1				1									1				1			1	1	
Swedish Edmonds															1			1					
Swedish Mill Creek																			1		1		
United General											1	1	1			1				1		1	
Whidbey Health				2				1				1											
Whidbey Health ED								1							1		1						